

MONTHLY MEMBERSHIP PROGRESS REPORT

District 28 U

Results as of: 5/31/2026

GMT:

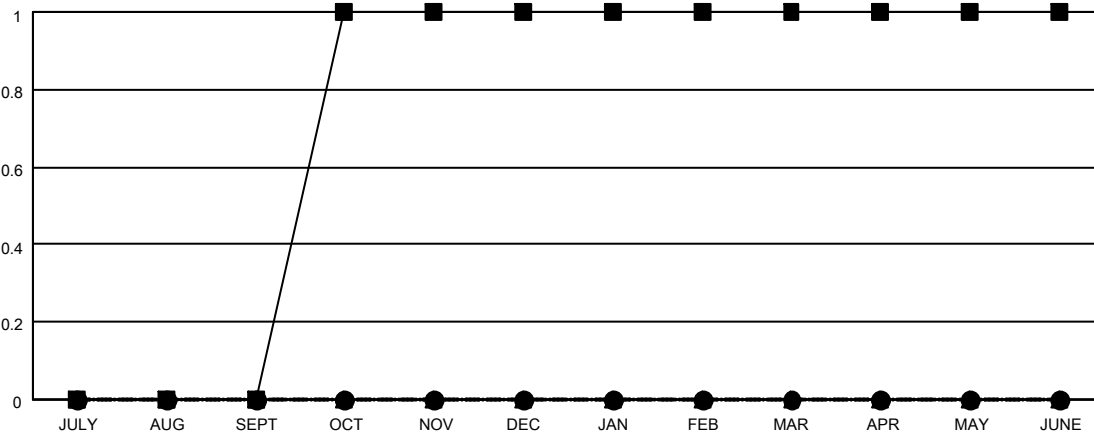
LOCATION UTAH

GMT CA

Clubs			
RESULTS FOR 2025-2026			
QUARTER	NEW CLUB GOAL	NEW CLUBS	DROPPED CLUBS
JULY/AUG/SEPT	0	0	0
OCT/NOV/DEC	1	0	0
JAN/FEB/MAR	0	0	0
APR/MAY/JUNE	0	0	0

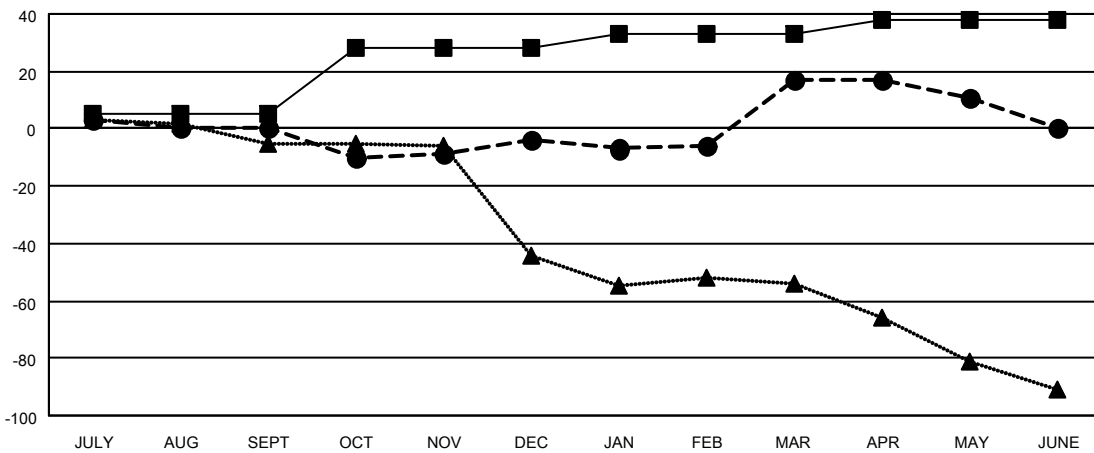
Members			
RESULTS FOR 2025-2026			
QUARTER	MEMBER GROWTH NET GOAL	MEMBER GROWTH ACTUAL	DROPPED MEMBERS ACTUAL (including transfers)
JULY/AUG/SEPT	5	20	17
OCT/NOV/DEC	23	13	17
JAN/FEB/MAR	5	30	8
APR/MAY/JUNE	5	9	13

GOALS AND ACTUAL NEW CLUBS CUMULATIVE



- - CURRENT YEAR GOALS FOR NEW CLUBS
- - CURRENT YEAR ACTUAL NEW CLUBS
- ▲ - LAST YEAR ACTUAL NEW CLUBS

GOALS AND ACTUAL MEMBERS CUMULATIVE



- - MEMBER GROWTH NET GOAL
- - MEMBER GROWTH ACTUAL
- ▲ - LAST YEAR MEMBERSHIP ACTUAL

DROPPED CLUBS: 0 DROPPED MEMBERS DECEASED 6 CLUB CANCELLED 0 OTHER 49 TOTAL 55	14 CLUBS OF 25 ADDED 1 OR MORE NEW MEMBERS	GENDER DISTRIBUTION MALE 286 (71.50%) FEMALE 114 (28.50%)
	CLICK HERE FOR CUMULATIVE MEMBERSHIP DATA	TOTAL FAMILY UNIT MEMBERS 63 FAMILY MEMBERS PAYING HALF DUES 33